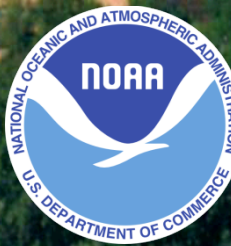


# NOAA Earth System Research Laboratory Boulder, Colorado



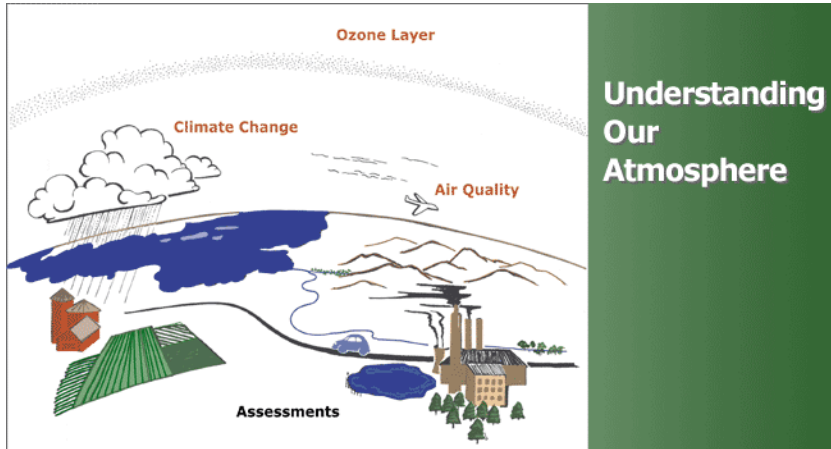


# NOAA Earth System Research Laboratory Boulder, Colorado

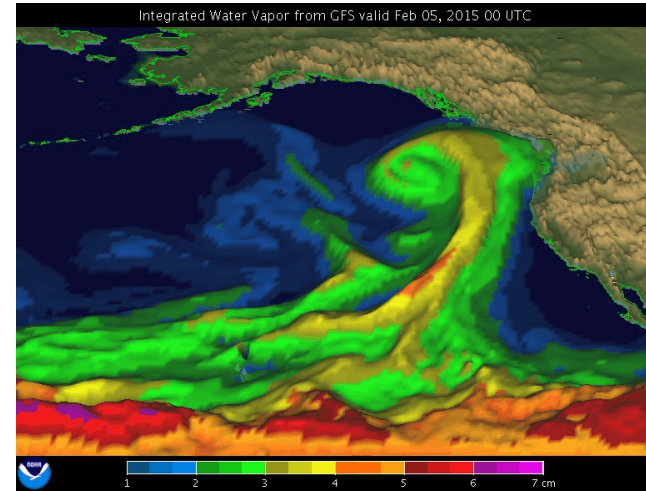
"To observe, understand and predict the Earth system through research that advances NOAA's environmental information and service from minutes to millennia on global-to-local scales."



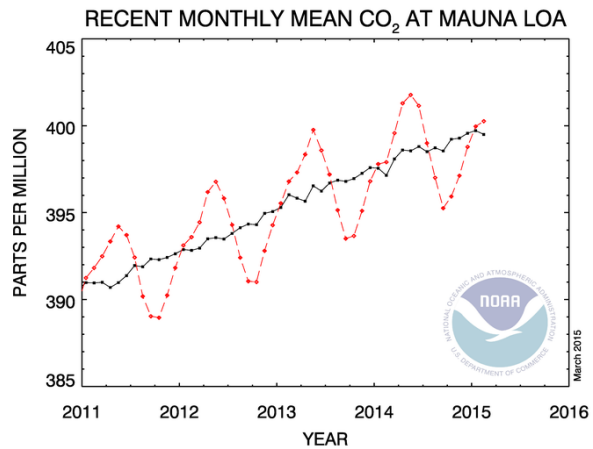
# Earth System Research Laboratory



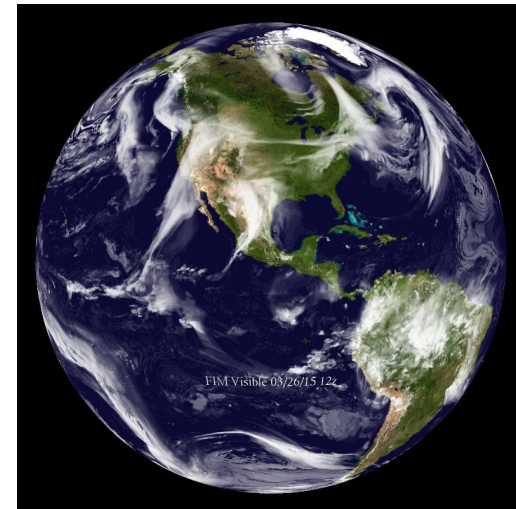
Chemical Sciences Division



Physical Sciences Division



Global Monitoring Division



Global Systems Division



# **The Earth System Analyzer:**

**Using all of the Data to Improve  
NOAA's Mission Capabilities**

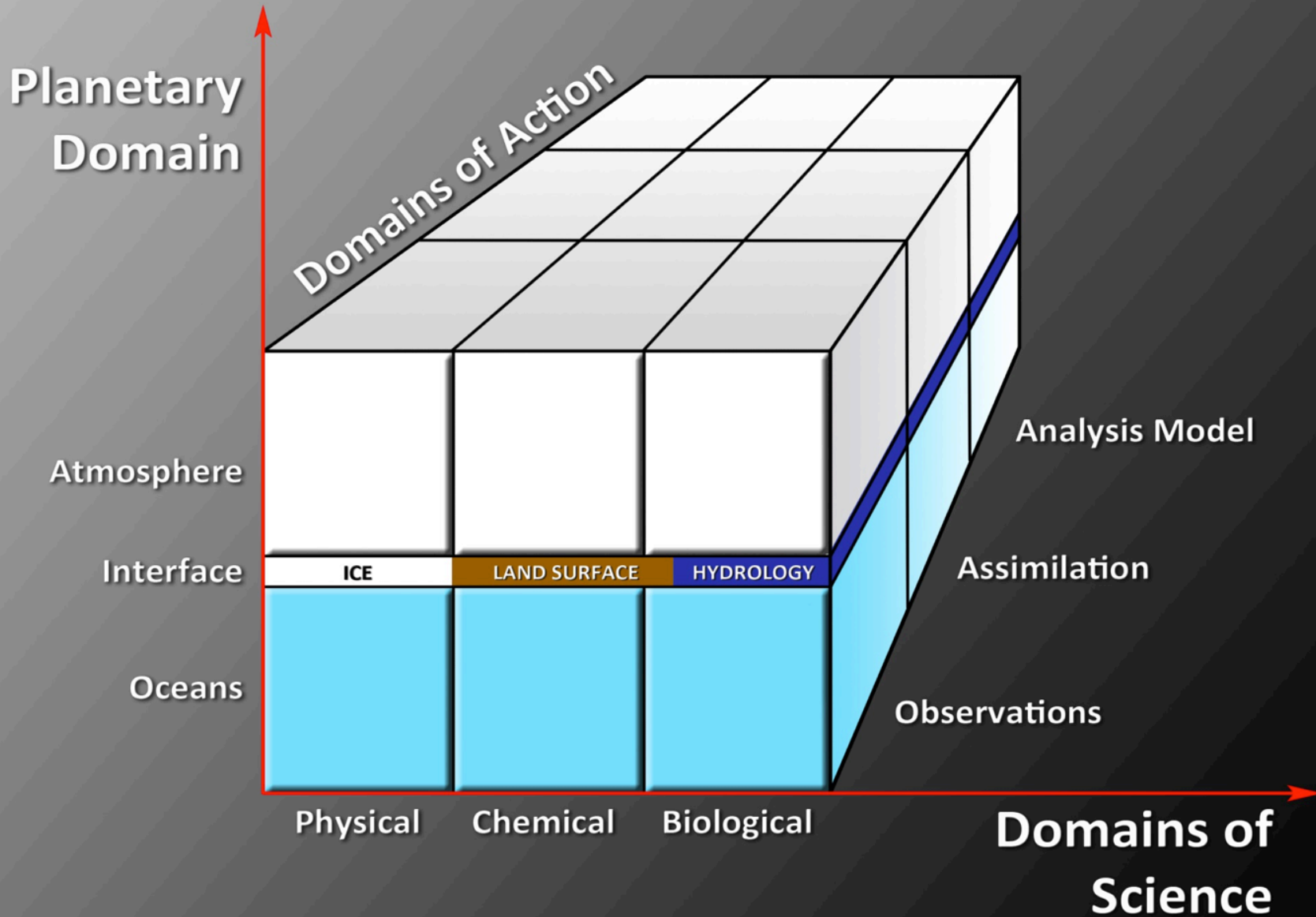
**Alexander E. MacDonald**

**NOAA  
Earth System Research Laboratory**





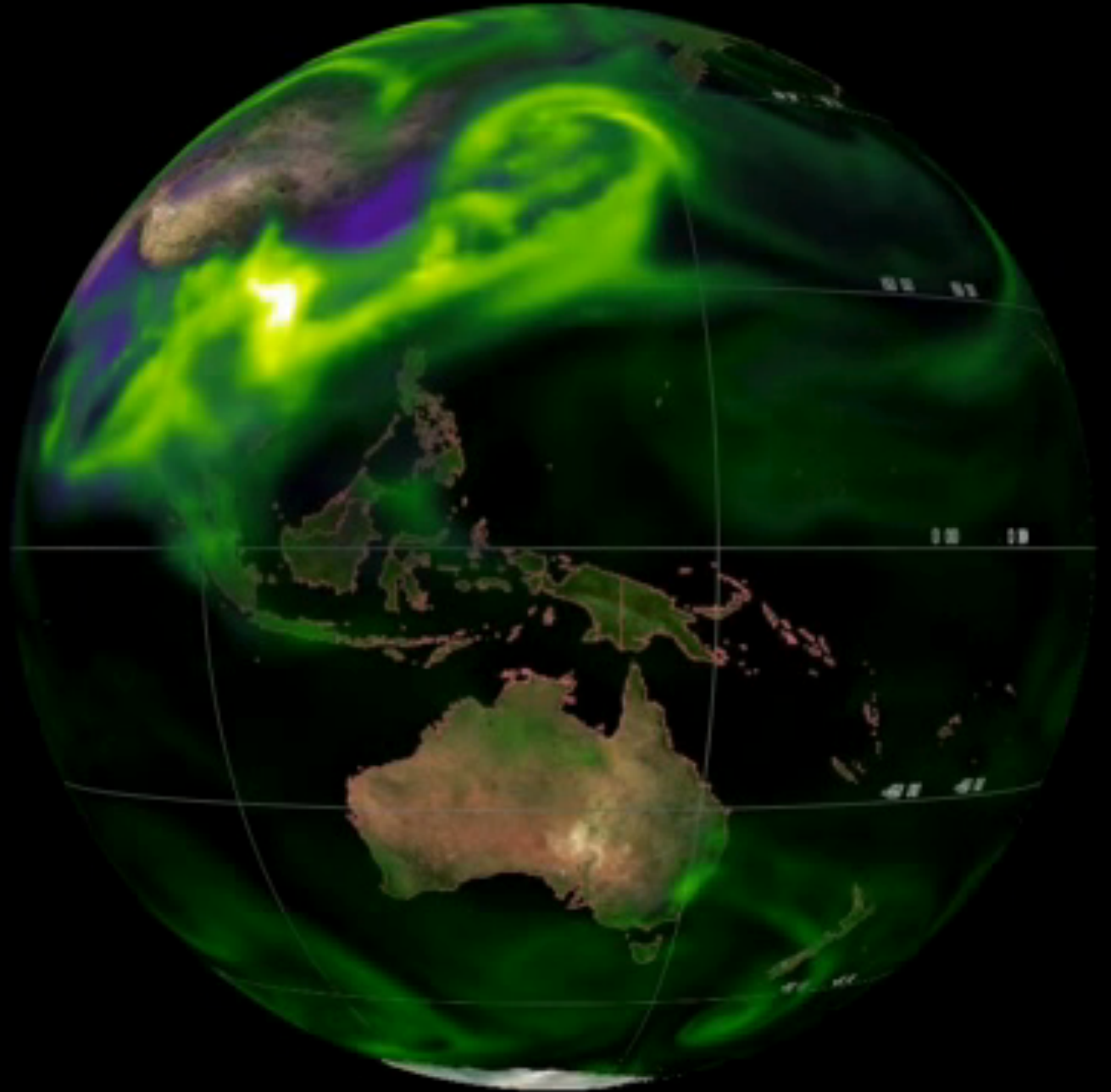
# Earth System Analyzer: Components





## Chemical:

**There are about a hundred atmospheric constituents that need to be tracked.**



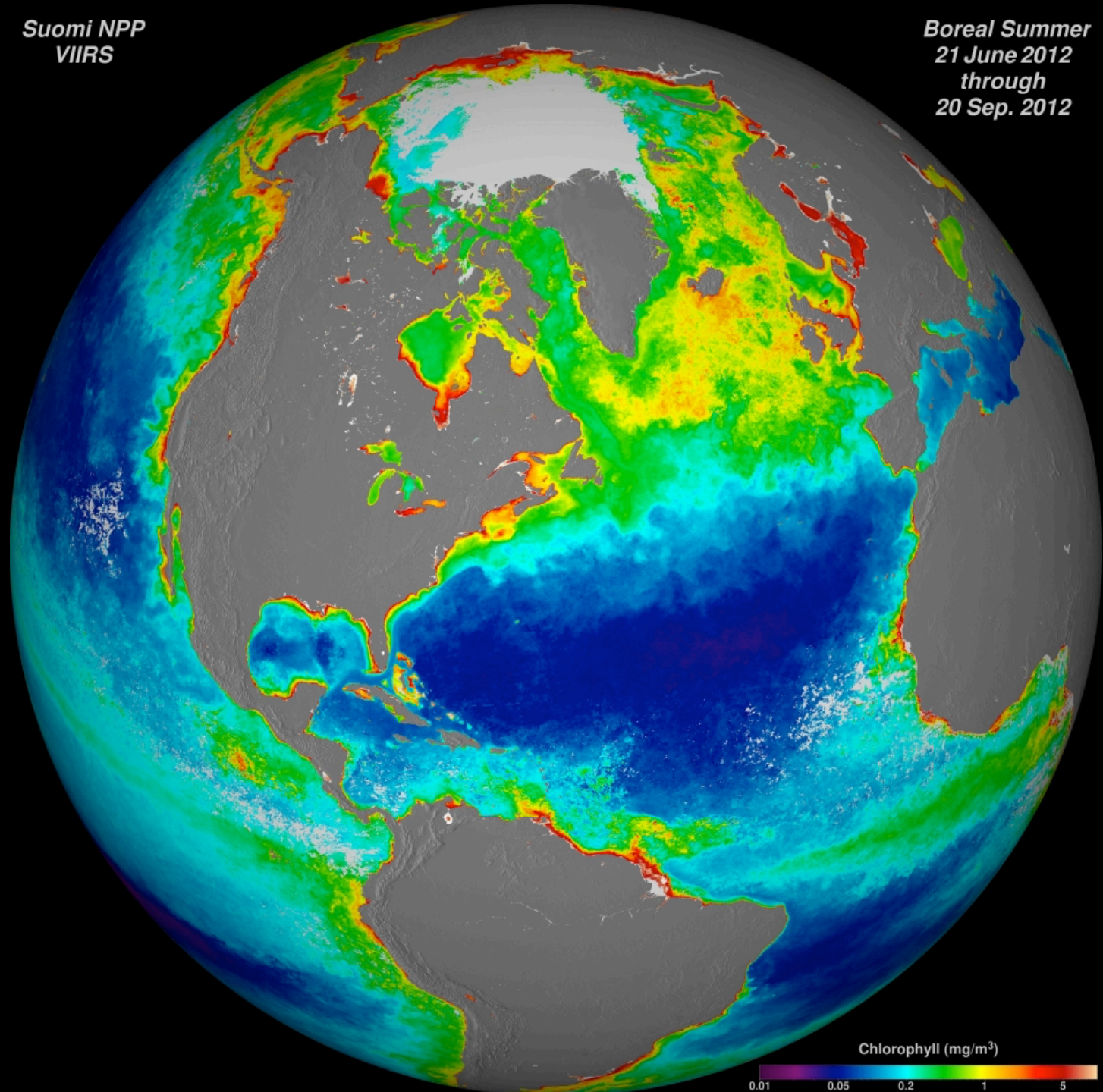


Suomi NPP  
VIIRS

Boreal Summer  
21 June 2012  
through  
20 Sep. 2012

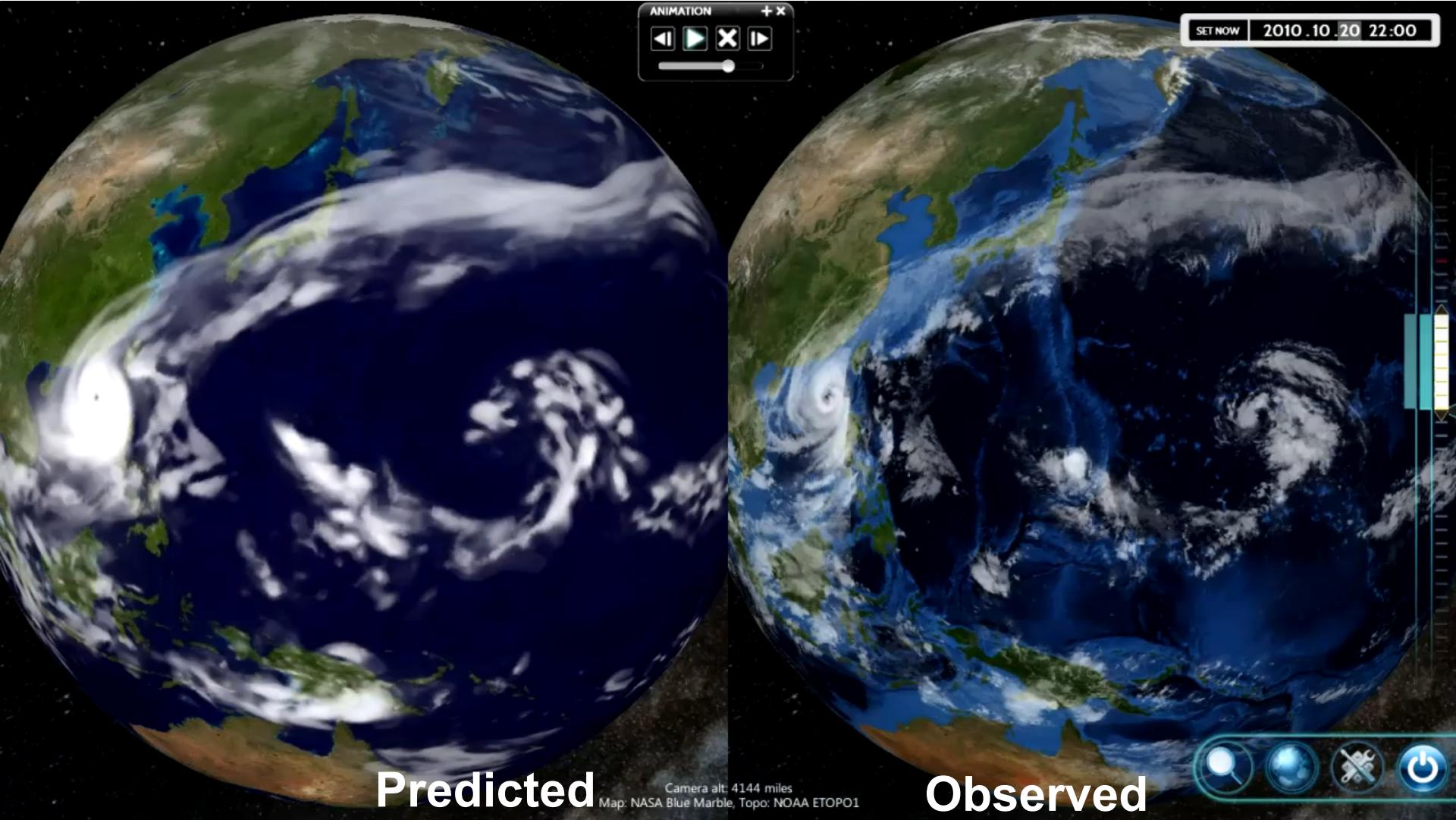
Biology:

The most  
complex  
part of the  
Earth  
System.





# ESRL FIM model prediction compared to actual satellite data for 7 days.





# Sources of Geophysical Predictability

