

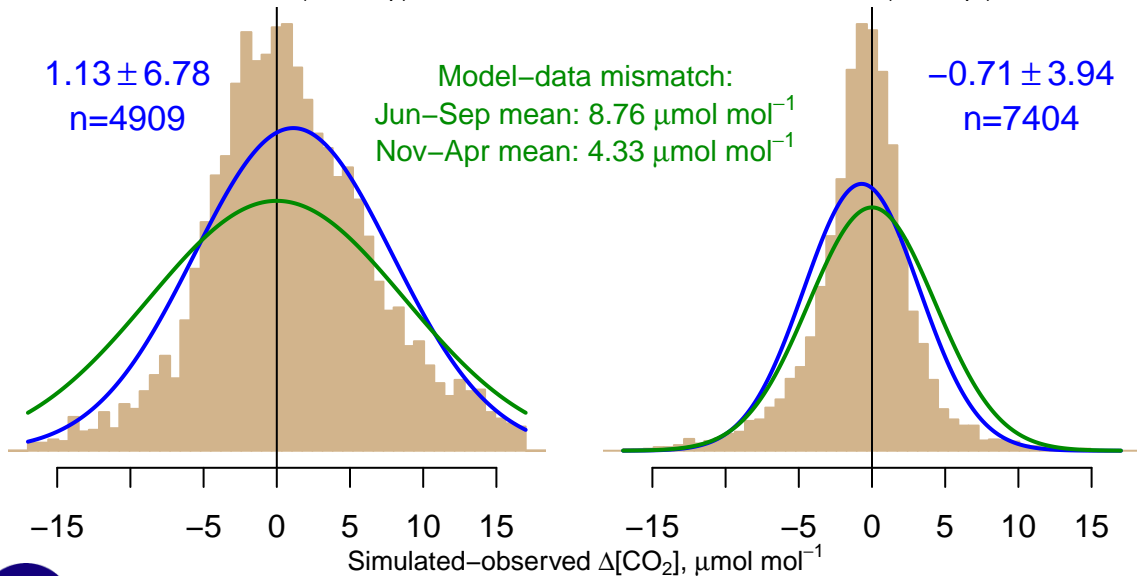
NH "Summer" (Jun–Sep)

NH "Winter" (Nov–Apr)

1.13 ± 6.78
 $n=4909$

Model–data mismatch:
Jun–Sep mean: $8.76 \mu\text{mol mol}^{-1}$
Nov–Apr mean: $4.33 \mu\text{mol mol}^{-1}$

-0.71 ± 3.94
 $n=7404$



Data from 01–Jul–2007 to 29–Mar–2019



*co2_wbi_tower-insitu_1_allvalid-99magl
CT2019, created 28–Jan–2020 00:28*