

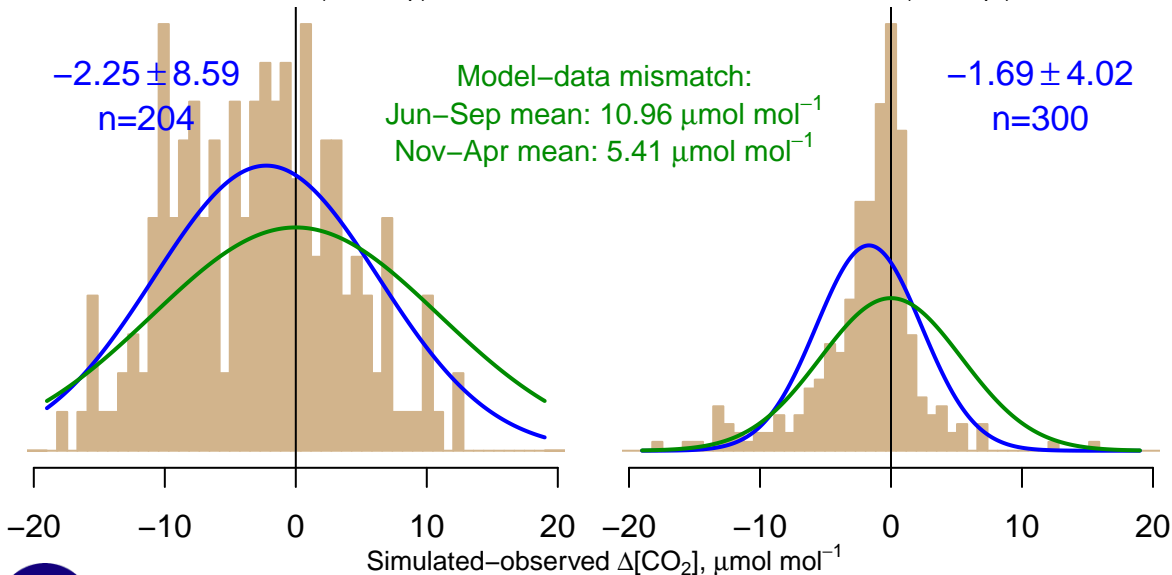
NH "Summer" (Jun–Sep)

-2.25 ± 8.59
 $n=204$

Model–data mismatch:
Jun–Sep mean: $10.96 \mu\text{mol mol}^{-1}$
Nov–Apr mean: $5.41 \mu\text{mol mol}^{-1}$

NH "Winter" (Nov–Apr)

-1.69 ± 4.02
 $n=300$



Data from 19–Apr–2002 to 01–Jun–2017

