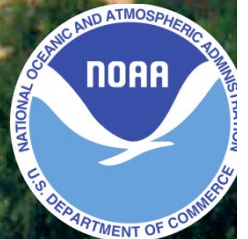


NOAA Earth System Research Laboratory Boulder, Colorado

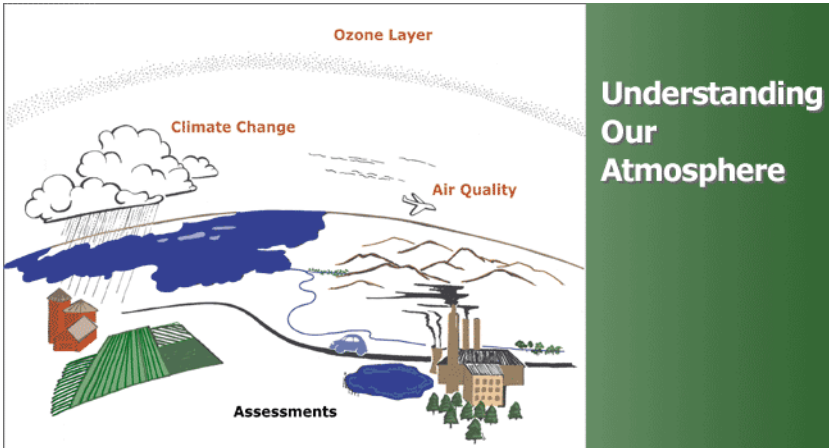


NOAA Earth System Research Laboratory Boulder, Colorado

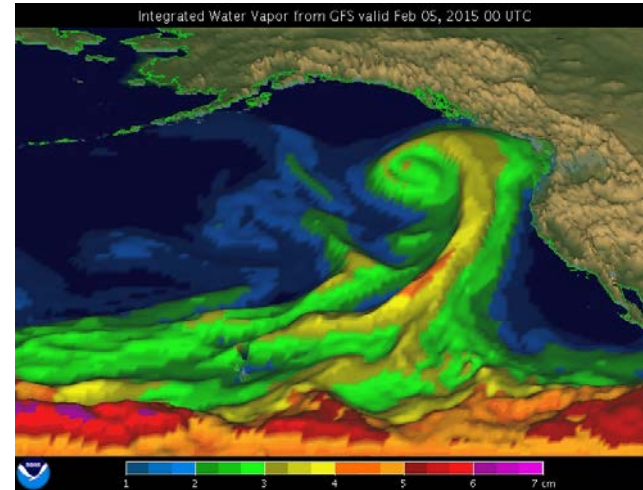
"To observe, understand and predict the Earth system through research that advances NOAA's environmental information and service from minutes to millennia on global-to-local scales."



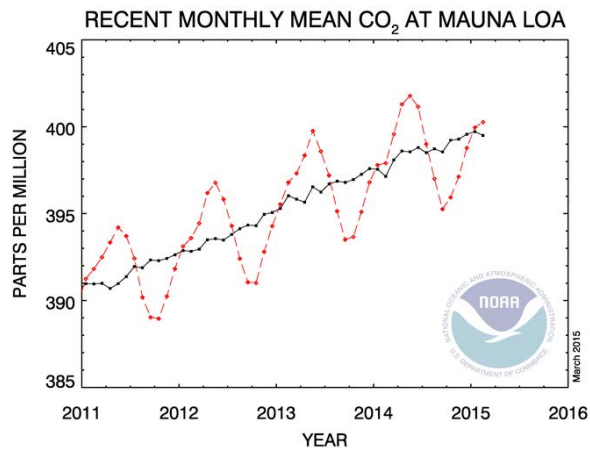
Earth System Research Laboratory



Chemical Sciences Division



Physical Sciences Division



Global Monitoring Division



Global Systems Division

The Earth System Analyzer:

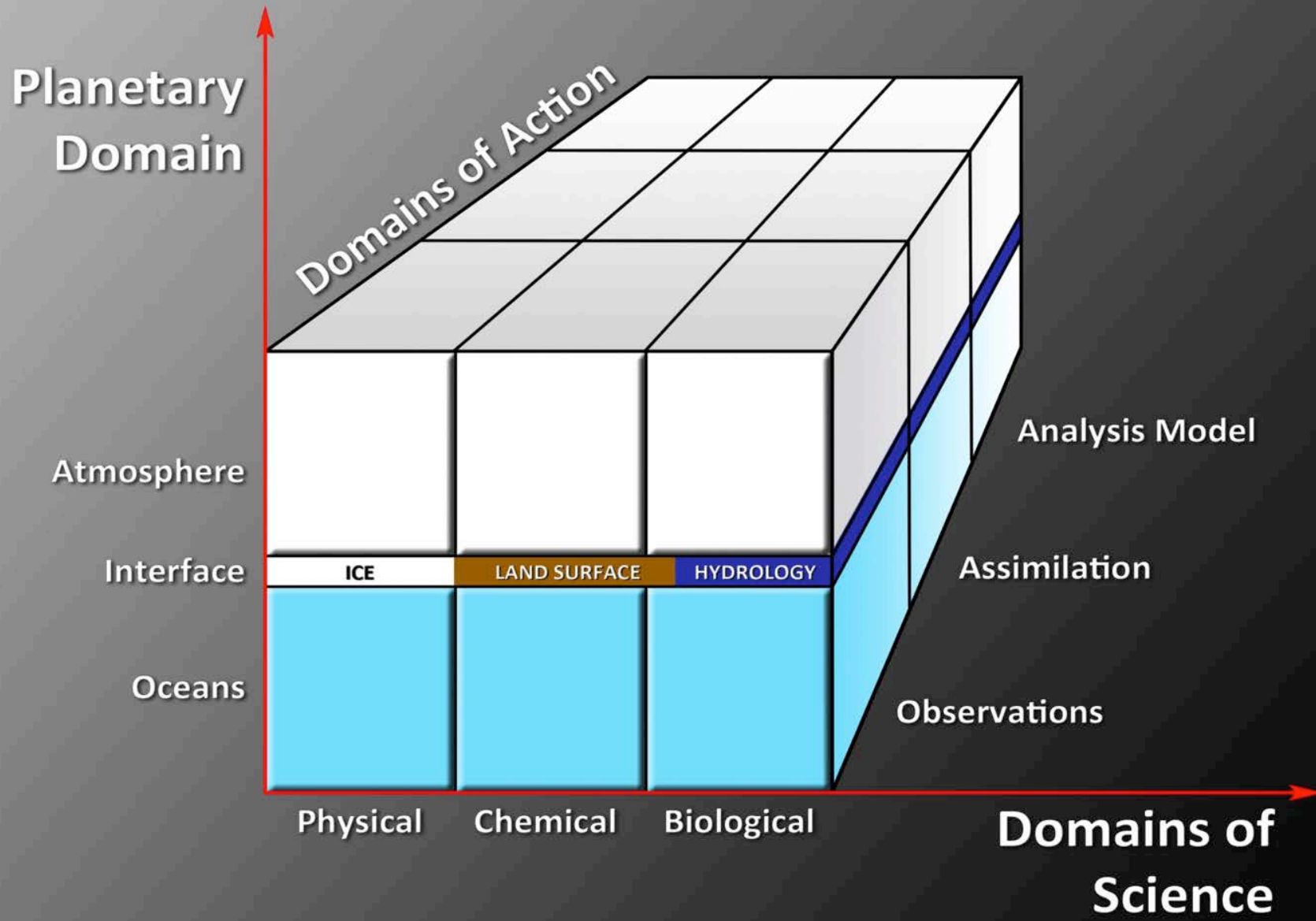
**Using all of the Data to Improve
NOAA's Mission Capabilities**

Alexander E. MacDonald

**NOAA
Earth System Research Laboratory**

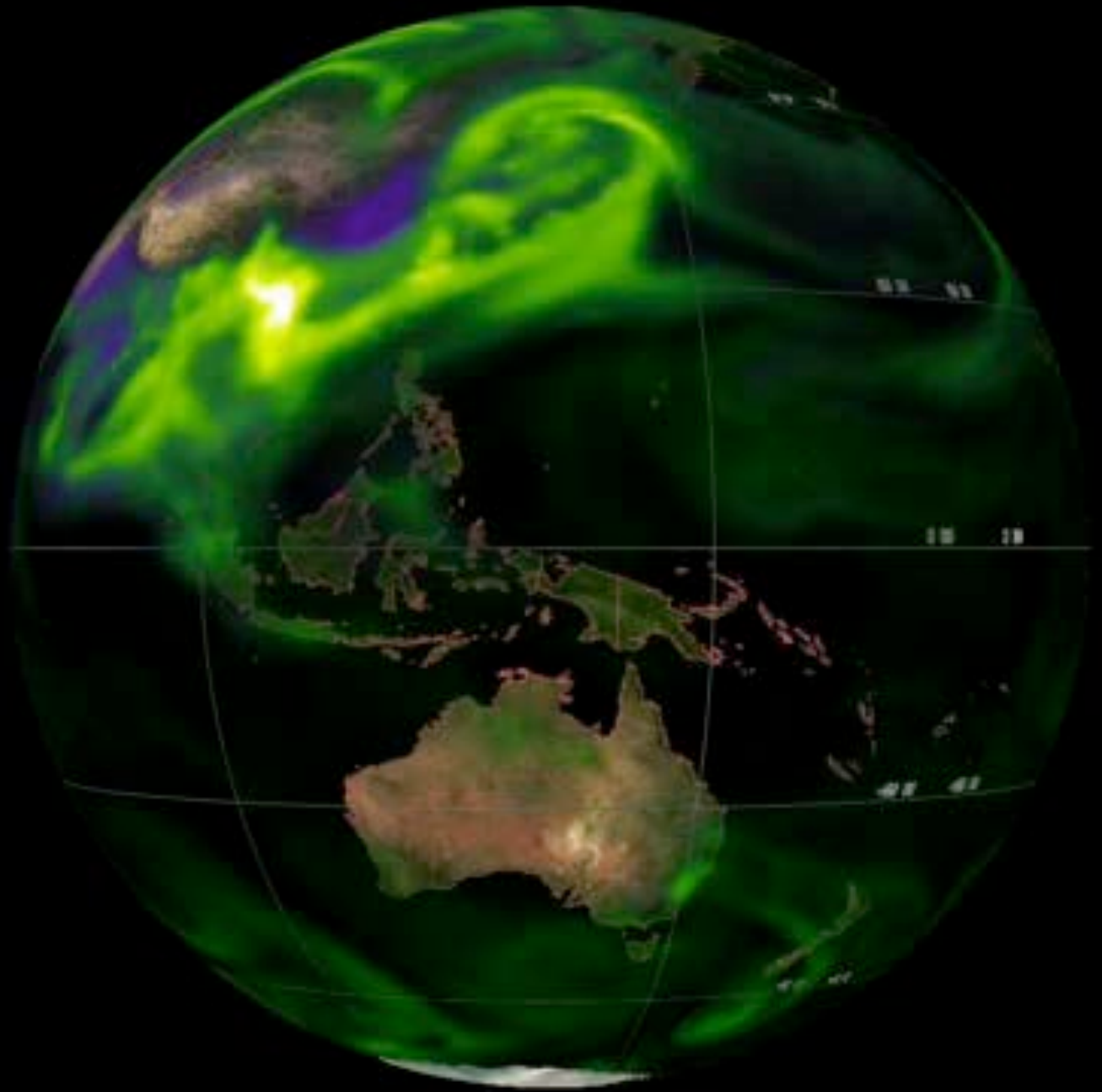


Earth System Analyzer: Components



Chemical:

There are about a hundred atmospheric constituents that need to be tracked.

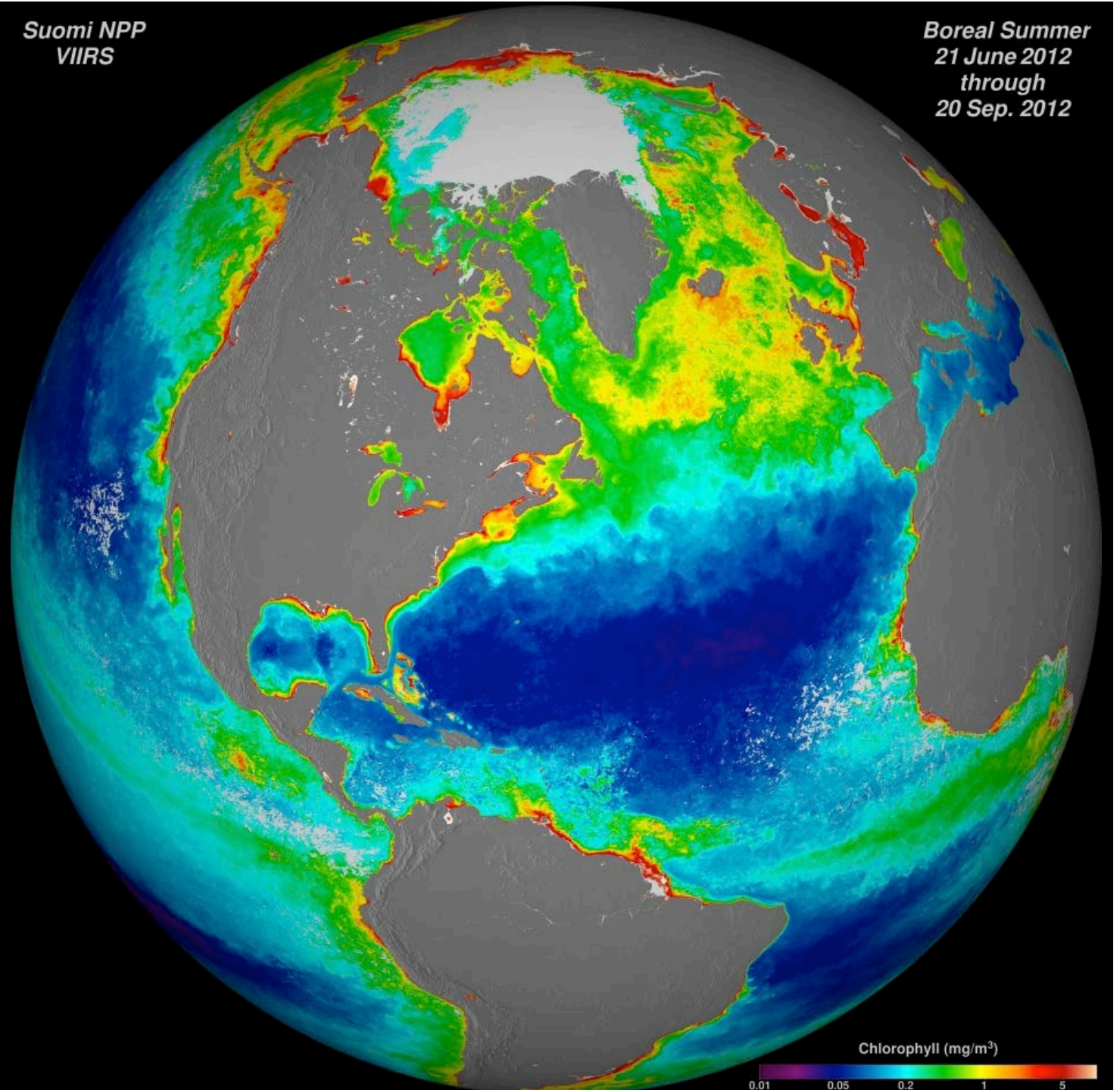


Suomi NPP
VIIRS

Boreal Summer
21 June 2012
through
20 Sep. 2012

Biology:

The most
complex
part of the
Earth
System.



ESRL FIM model prediction compared to actual satellite data for 7 days.

