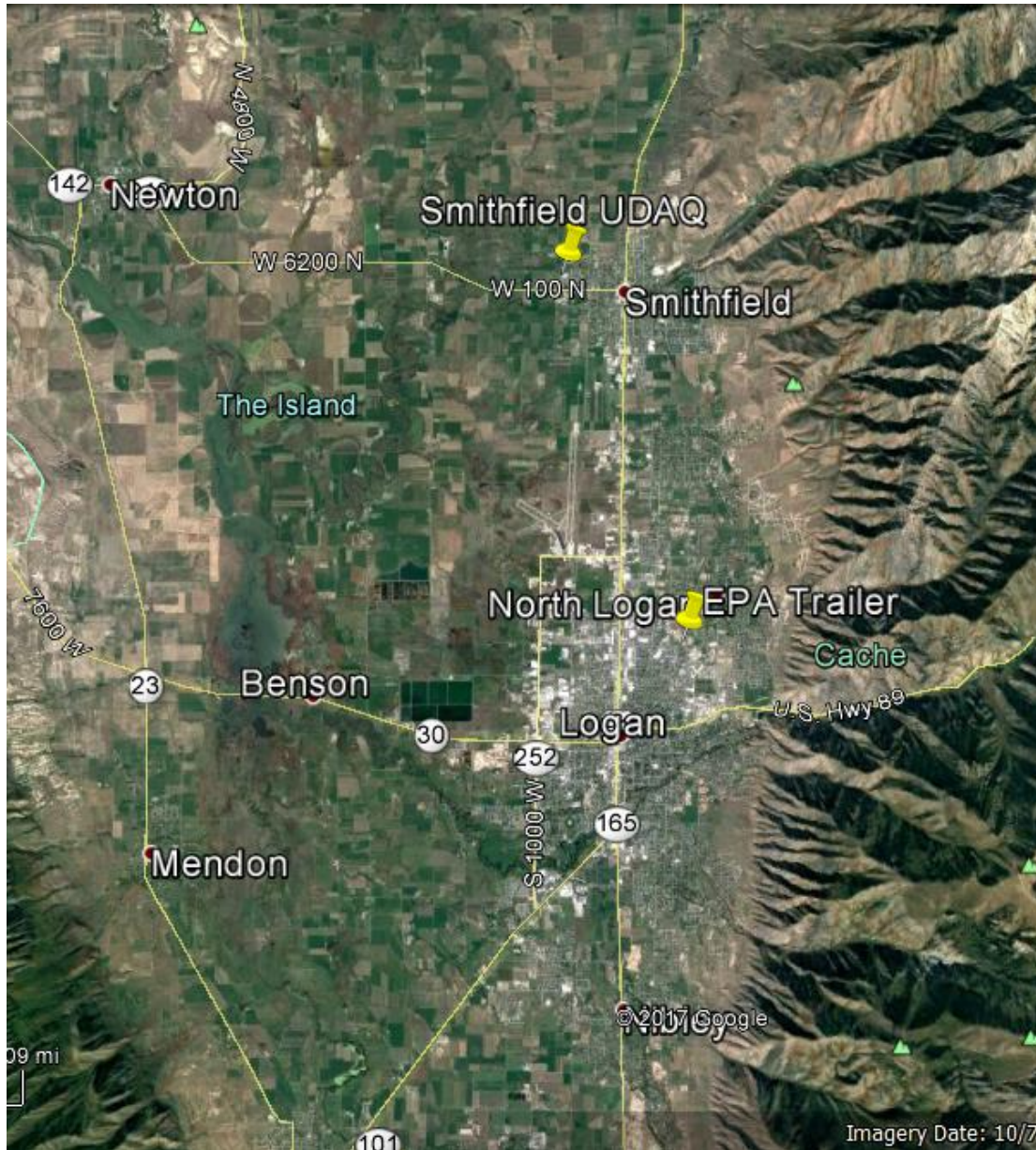
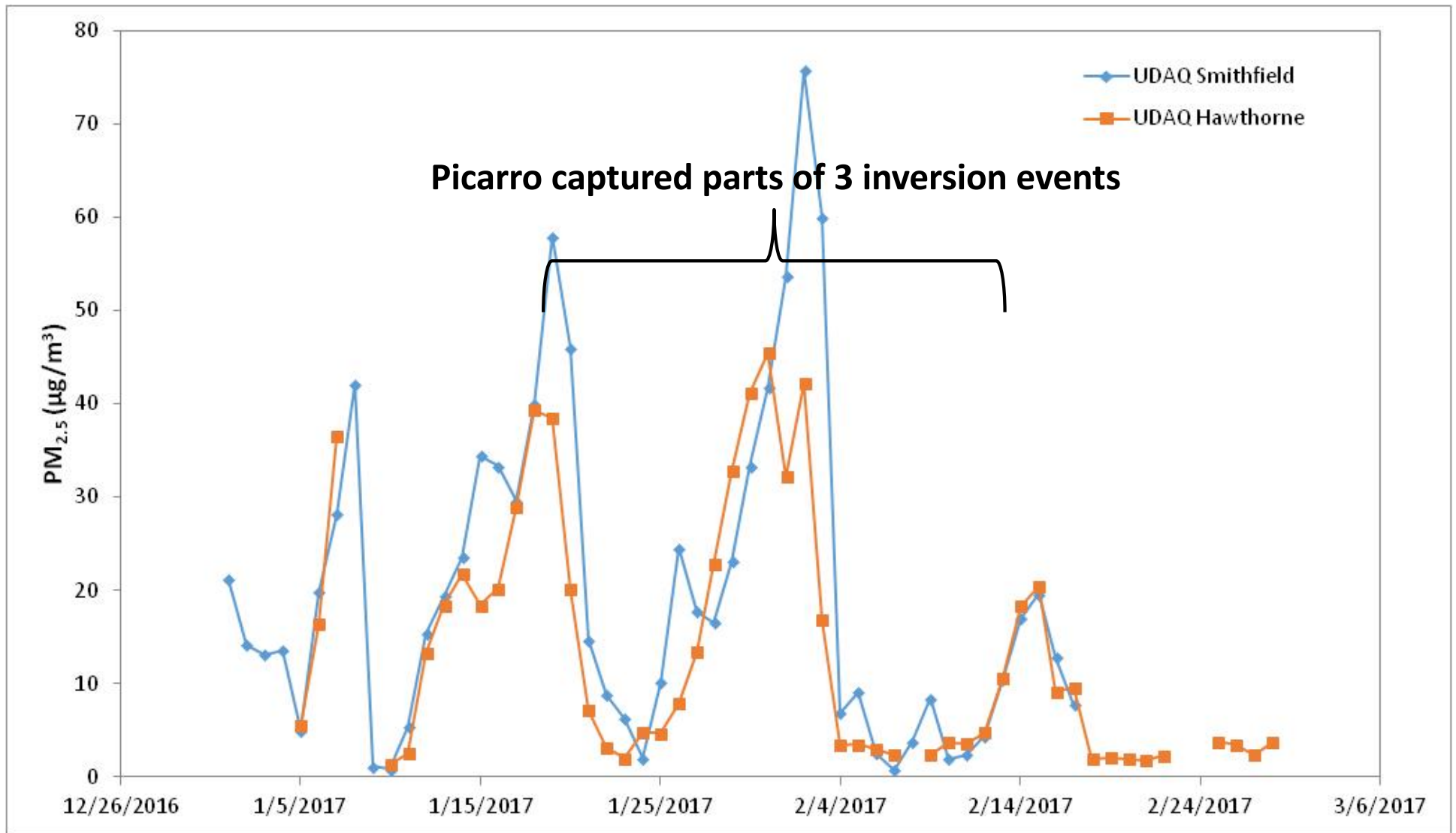


Cache Valley Sample Locations

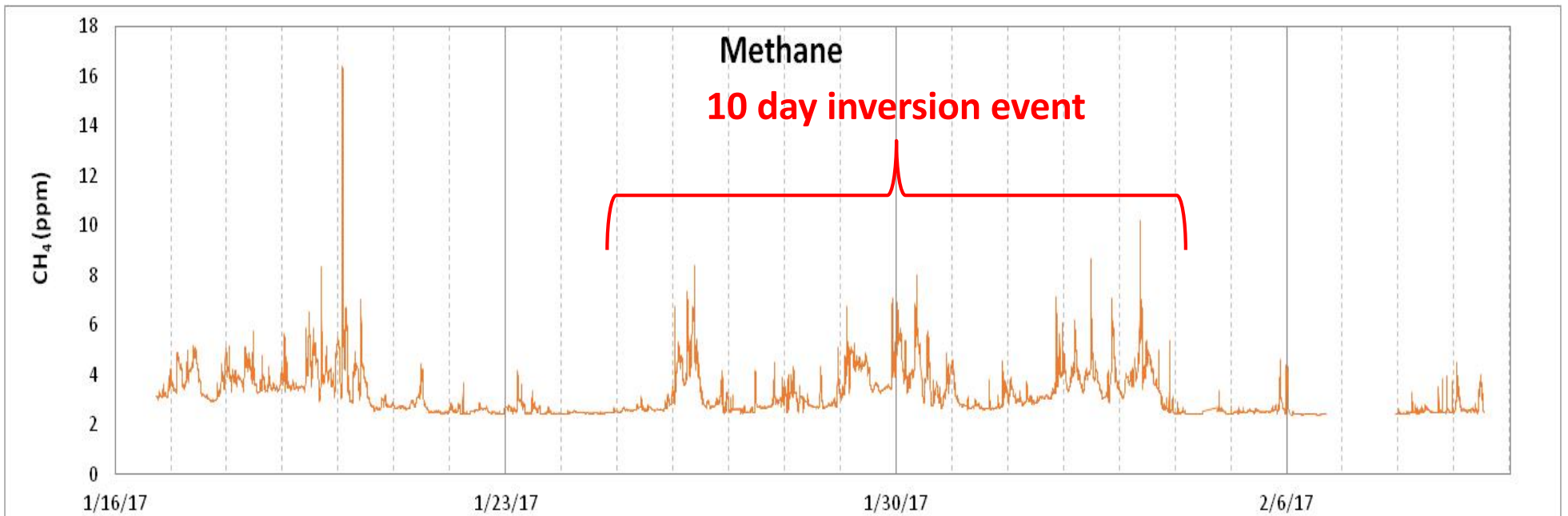
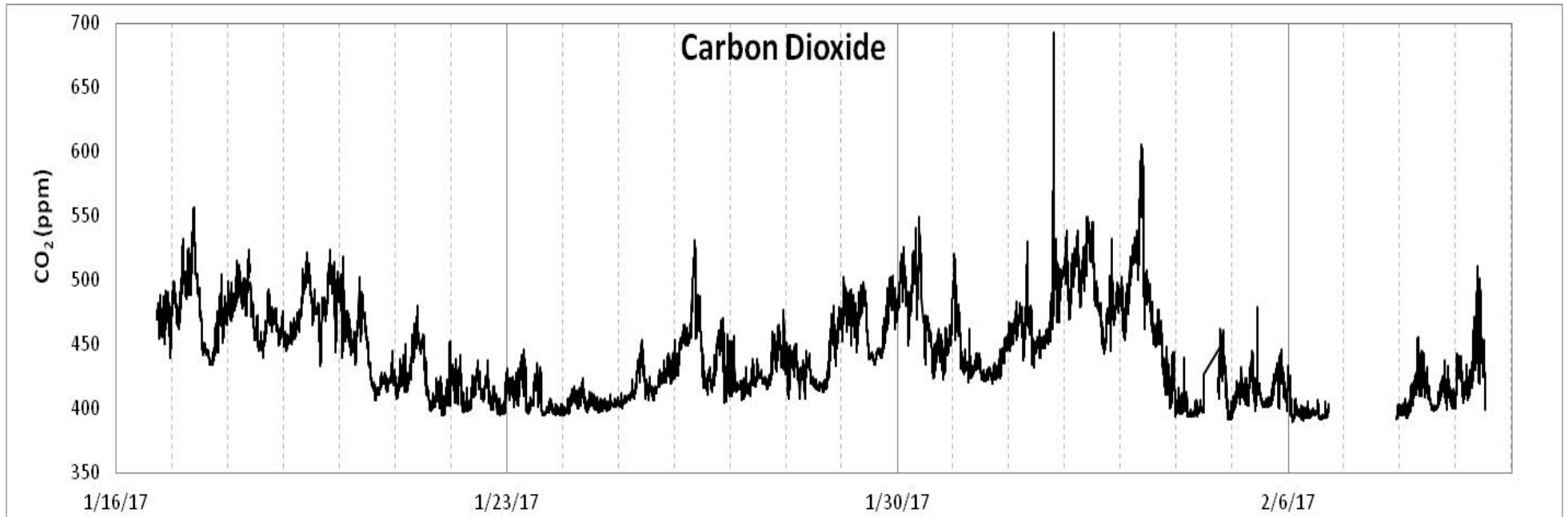


- EPA trailer located near USU campus in Logan, UT
 - Picarro @ EPA trailer
 - NH_3 , CO_2 , CH_4
 - ≈ 5 sec data
 - Sampled 1-16-17 to 2-14-17
- UDAQ CV monitoring site located in Smithfield
 - approx. 9.8 km from EPA trailer
 - approx. 28 m elevation difference (SM lower)

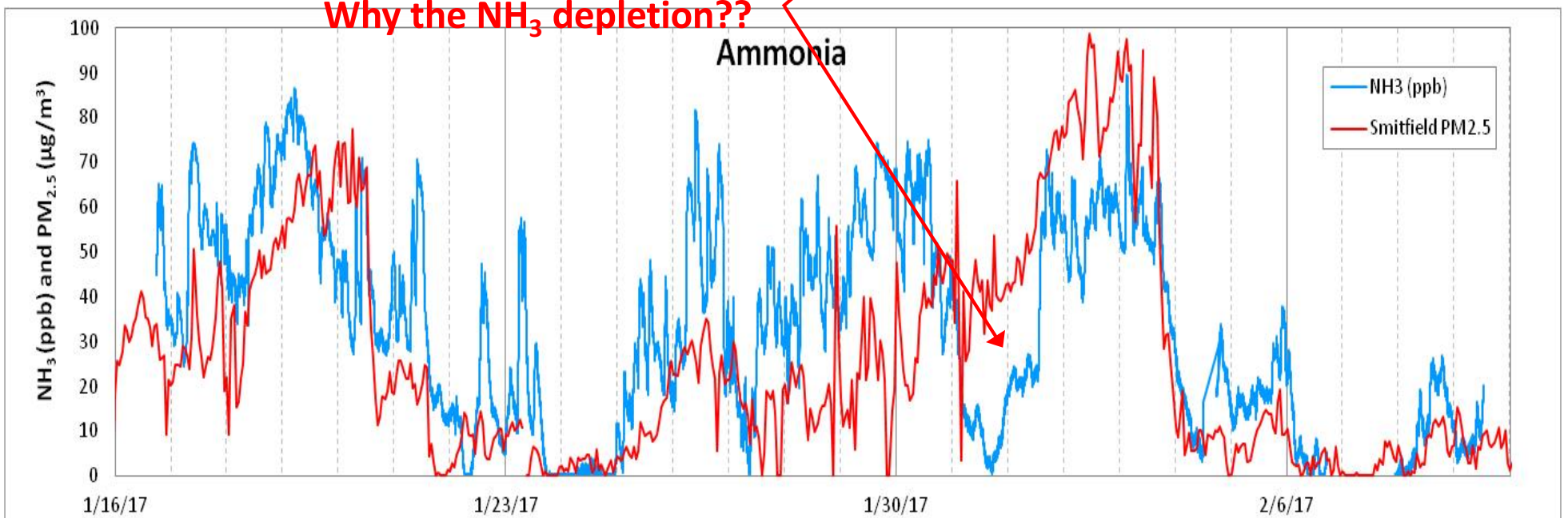
UDAQ 24-hr PM_{2.5}



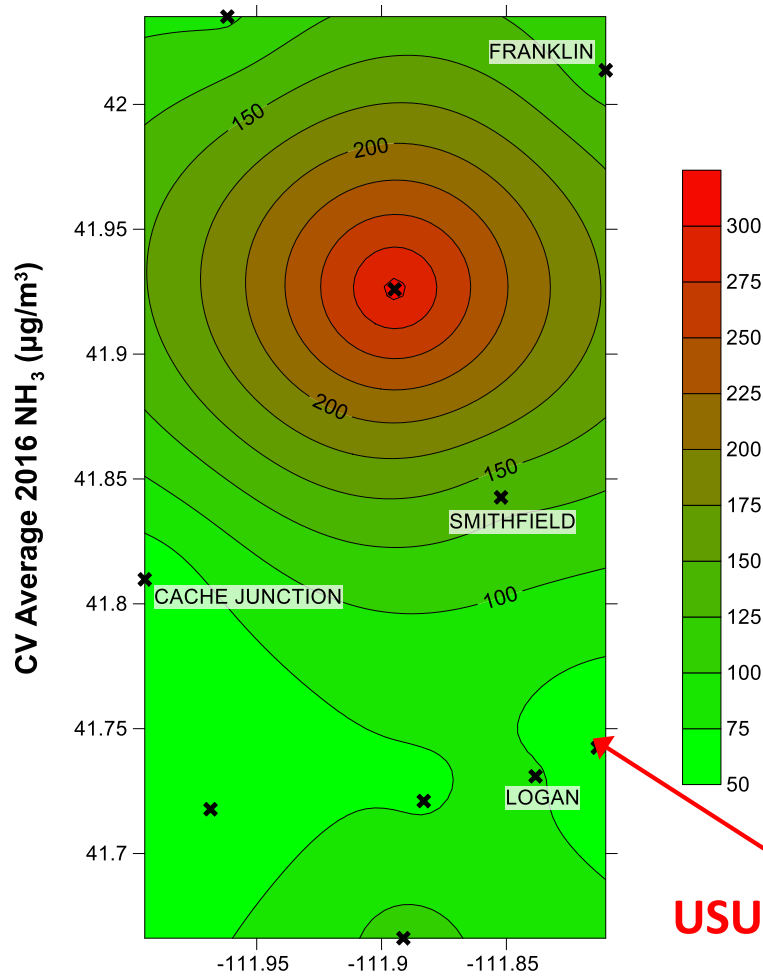
Picarro Data (CO₂ and CH₄)



Picarro Data (NH₃)



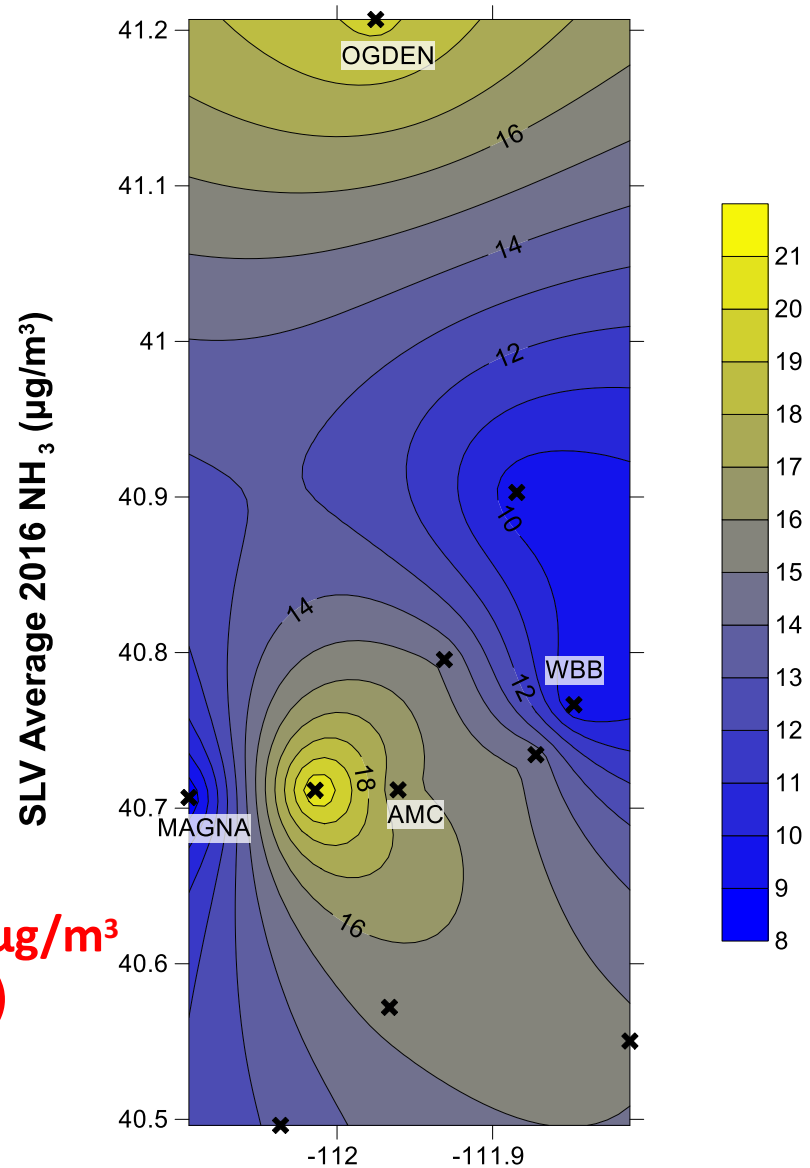
Jan/Feb 2016 Passive NH₃ (NADP talk)



CV 2016 NH₃: 106.6 µg/m³ (≈153 ppb)

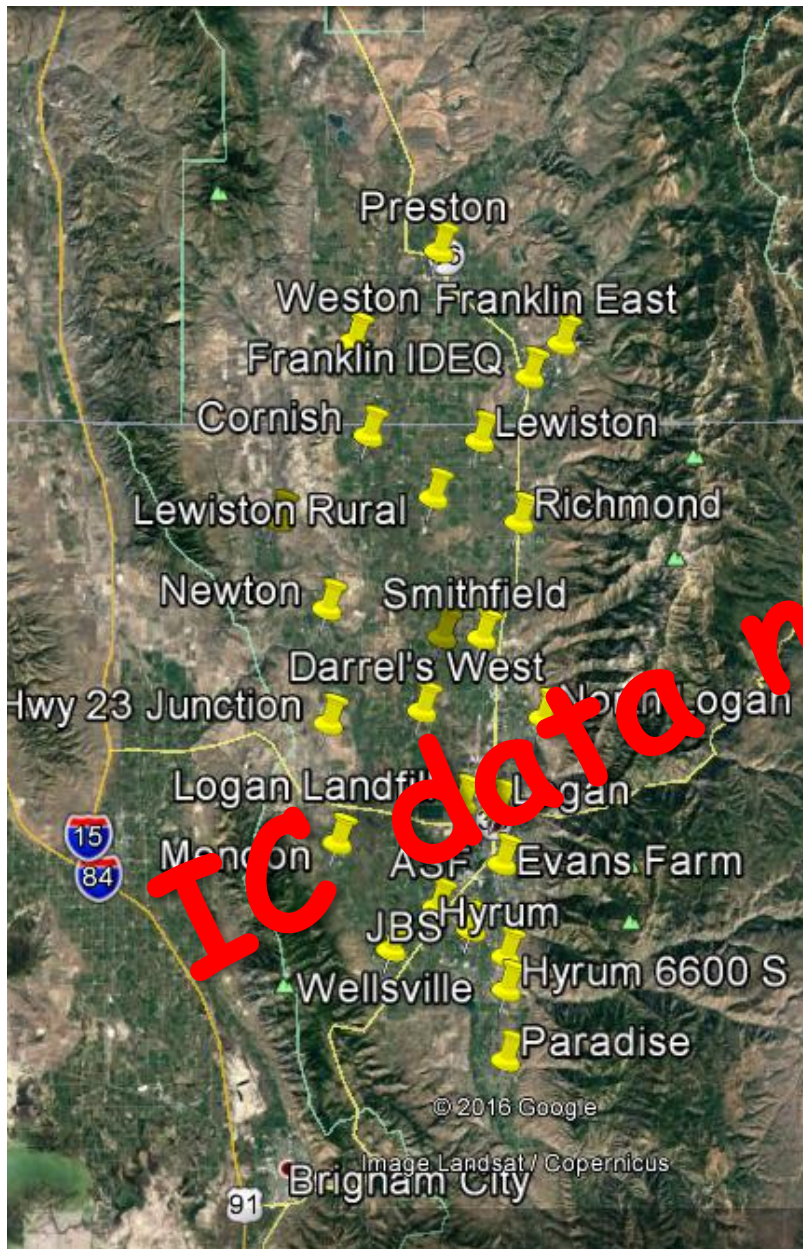
– five 7-day sample periods in 2016

– 2006 winter NH₃: 29.1 µg/m³ (≈42 ppb)



Wasatch Front 2016 NH₃: 14.2 µg/m³ (≈20 ppb)

2107 Passive NH₃ Sampling Networks



- Ogawa passive NH₃ samplers
- IC analysis (USDA, Dr. Phil Silva)
- 25 sites in Cache Valley
 - Some sites intentional located near probable high emission areas
- 11 sites located along the Wasatch Front

