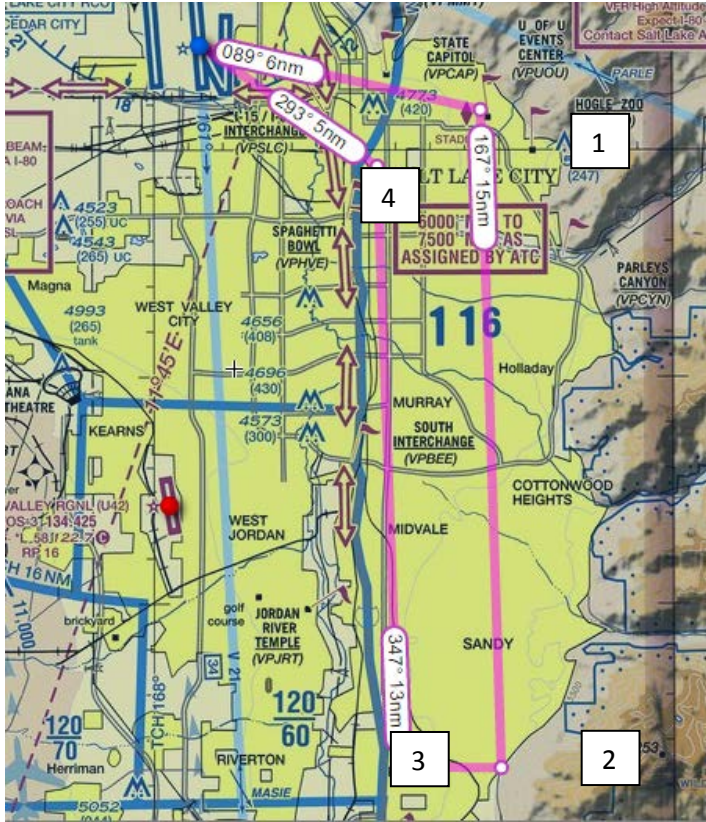


NOAA N48RF Utah Air Chemistry Project

Flight Plan 3 Box Pattern



Waypoint	lat/long	Alt AGL	Alt MSL
KSLC	takeoff		
1	404543N1115102W	1,000'	5,800'
2	403124N1115055W	1,000'	5,600'
3	403124N1115259W	1,000'	5,400'
4	404524N1115318W	1,000'	5,600'
1	404543N1115102W	1,500'	6,300'
2	403111N1115055W	1,500'	6,100'
3	403124N1115259W	1,500'	5,900'
4	404524N1115318W	1,500'	6,100'
...			
then alternate between 1,000' AGL and 1,500' AGL for 2 hours total			
...			
KSLC	Landing		