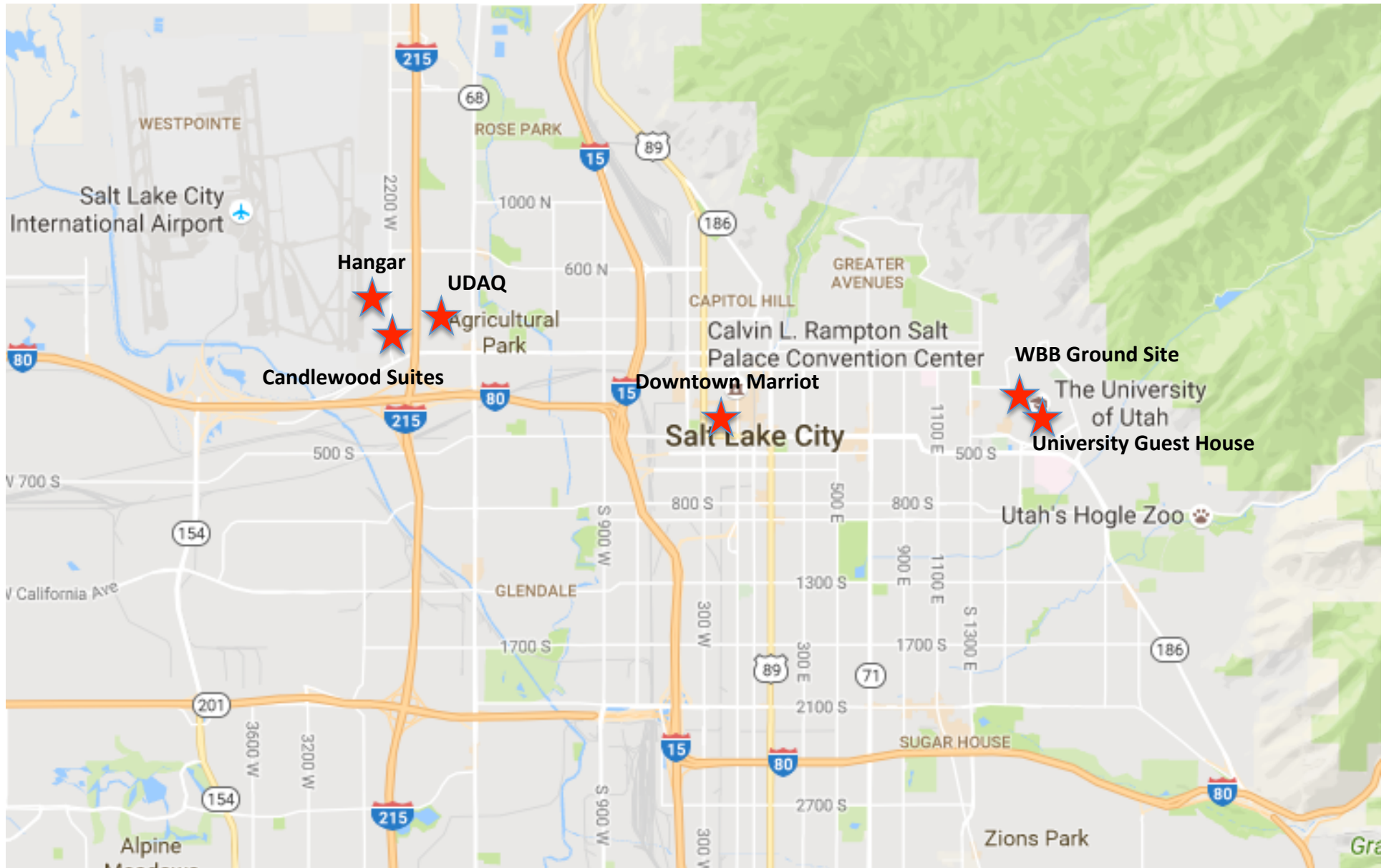


UWFPS Twin Otter Telecon – September 26, 2016

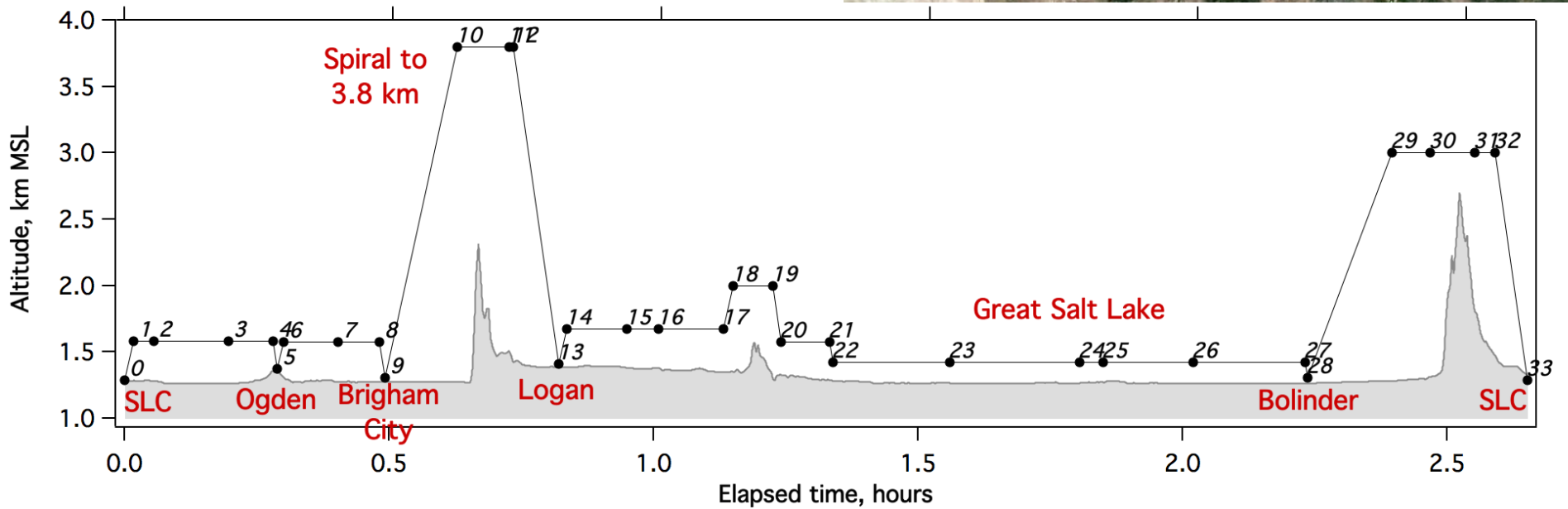
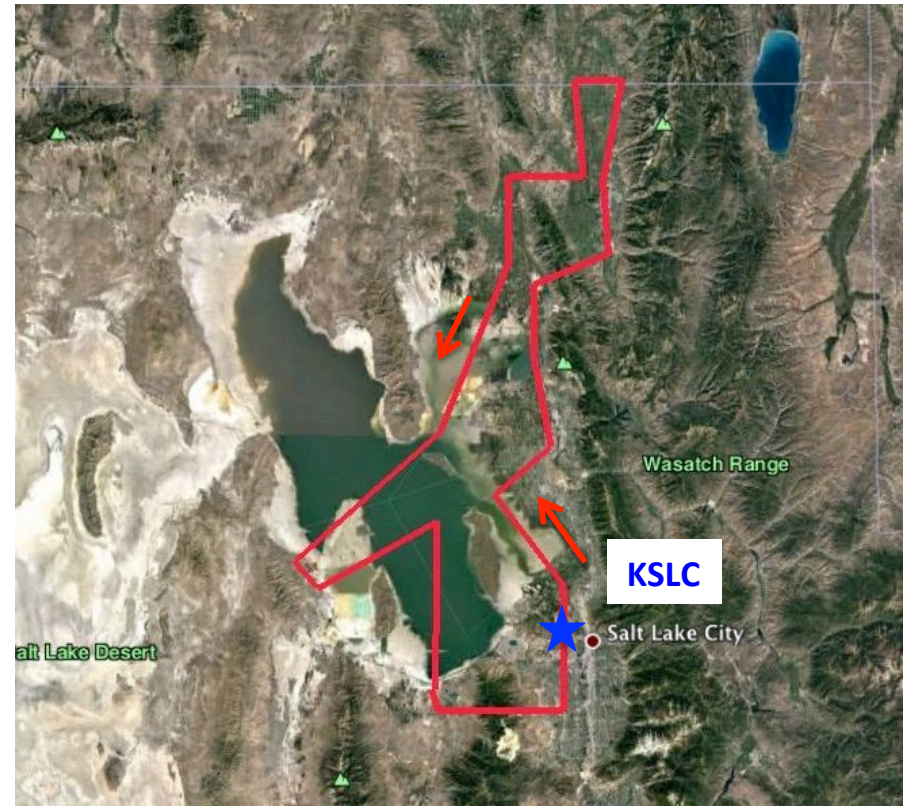
- Updates from instrument groups on current instrument status and prep
- Hotel and meeting space decision – need to finalize
- Flight planning updates
- Information that I will collect in the coming week
- Questions ?

Hotel and Meeting Space Locations



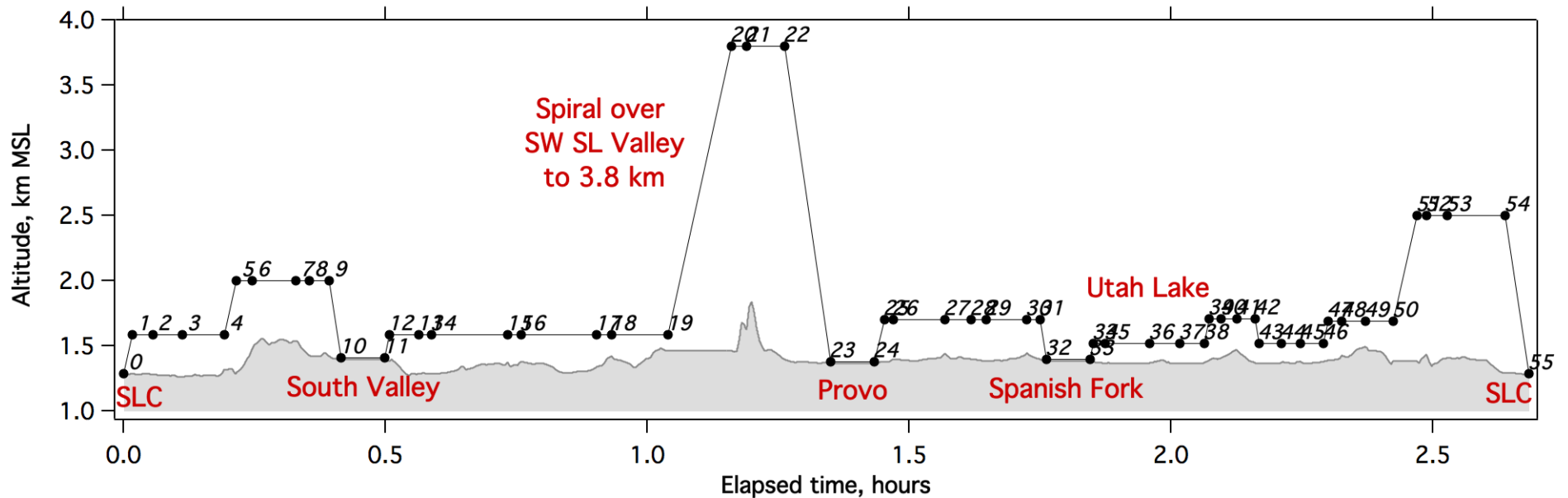
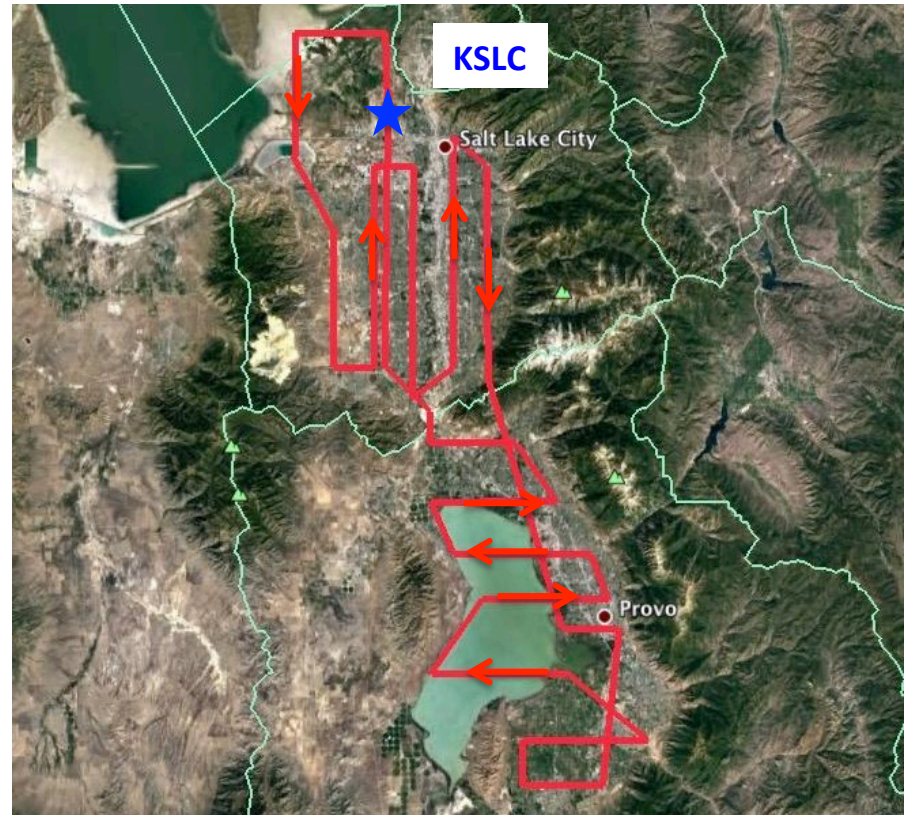
Flight Plan #1

Survey flight to the north of Salt Lake city including Ogden, Cache Valley, Beaver River Valley, Great Salt Lake and Tooele Valley



Flight Plan #2

Focused survey of urban areas of Salt Lake and Utah Valleys



Proposed Flight Times

5 AM – 7:45 AM	8:45 AM – 11:30 AM	Night into day, BL breakup
10 AM – 12:45 PM	1:45 PM - 4:30 PM	Daytime, mixed BL, Photochemistry
5:30 PM – 8:15 PM	9:15 PM – Midnight	Evening, night, BL sets up

January 31: Sunrise = 7:39 AM
 Sunset = 5:43 PM

Information that I will request this week:

- Hazardous materials list
- Consumables lists – begin purchasing in early October
- Invitational travel arrangements for external investigators
- Foreign national information for access to Twin Otter